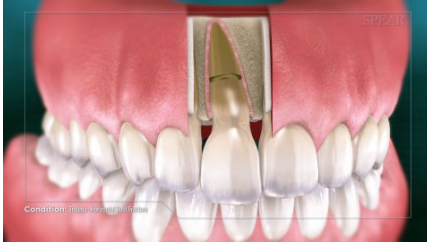
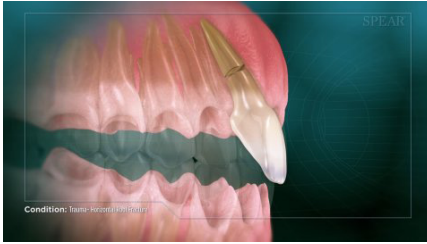


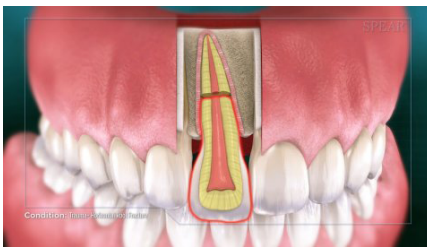
Trauma- Horizontal Root Fracture



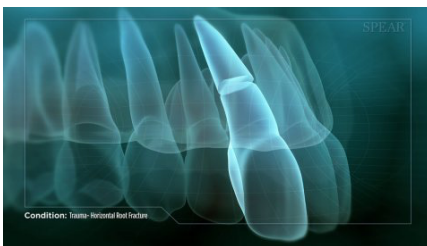
A root fracture is defined by a tooth cracking beneath the gumline and across the root- completely separating the tooth and the root pulp within.



This often occurs as the result of trauma or impact to the face and mouth.



Depending on the location of the fracture along the tooth, it may become visually displaced and/or mobile, alerting you that it has been damaged.



However, in some cases, the tooth may remain fixed in place with little or no mobility, and will require your doctor to take x-rays of the area to diagnose the extent of the injury.



It is important to seek treatment for a fractured root immediately to increase the likelihood that your doctor can preserve the tooth. Treatment varies depending on the nature and location of the injury- your doctor will discuss options with you that provide the best possible outcome.

